

# DUAL-RTX3060TI-8G

(CG190PI)

## Repair Guide

### Model List

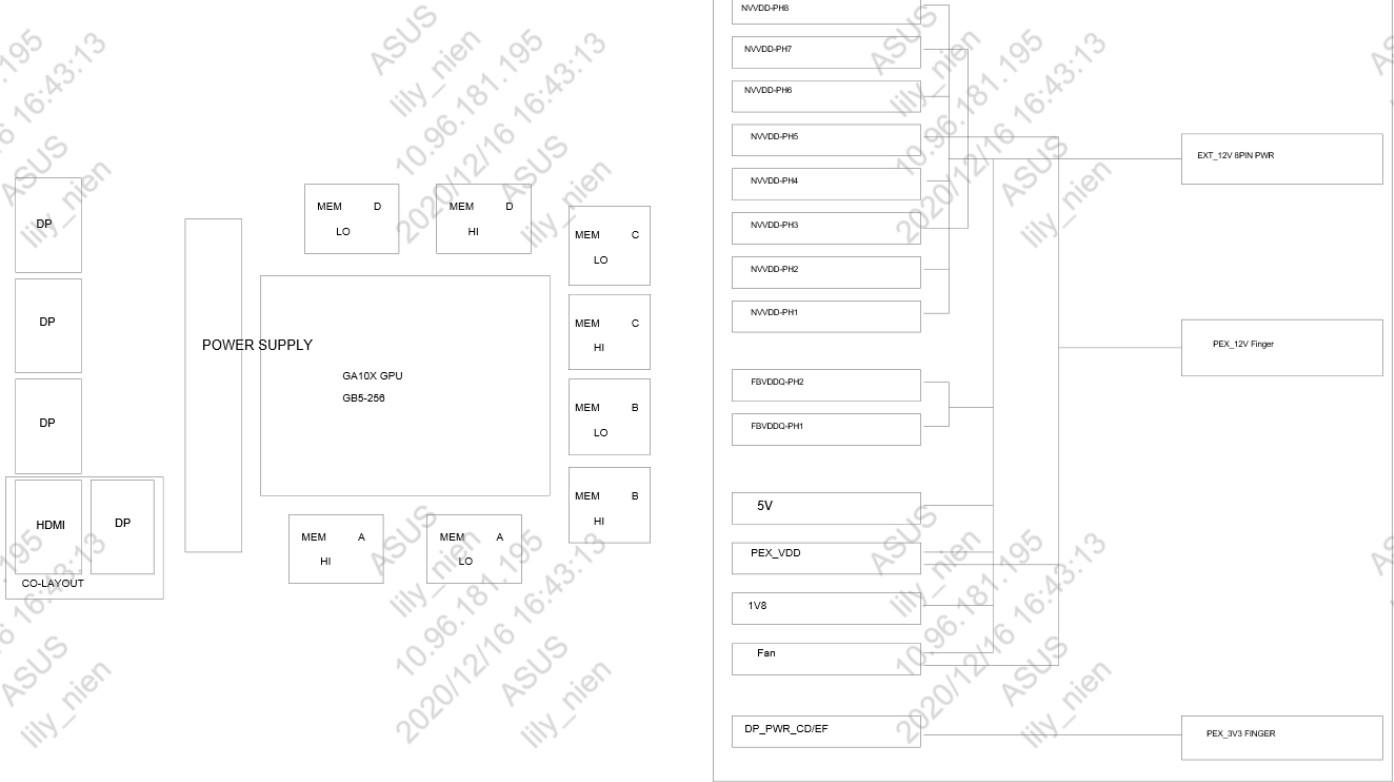
Model name	60PN	GPU	Date
DUAL-RTX3060TI-8G	YV0G13	CG190PI	2020/12/16

### STANDARD APPEARANCE

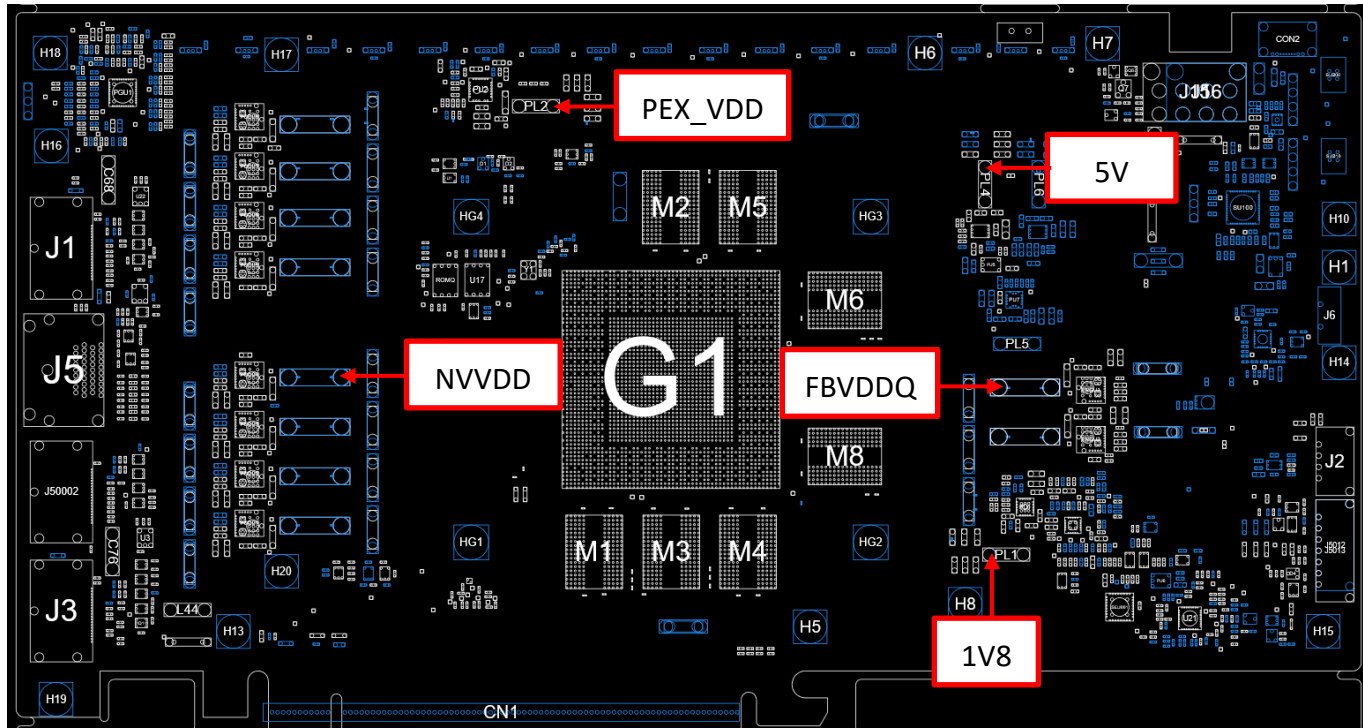
DUAL-RTX3060TI-8G



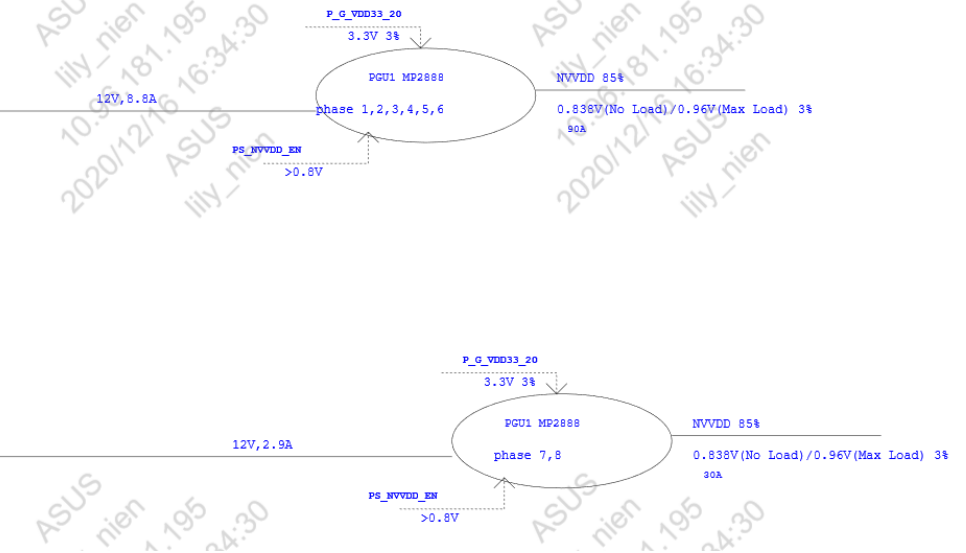
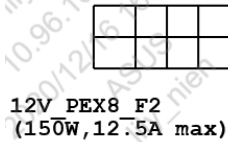
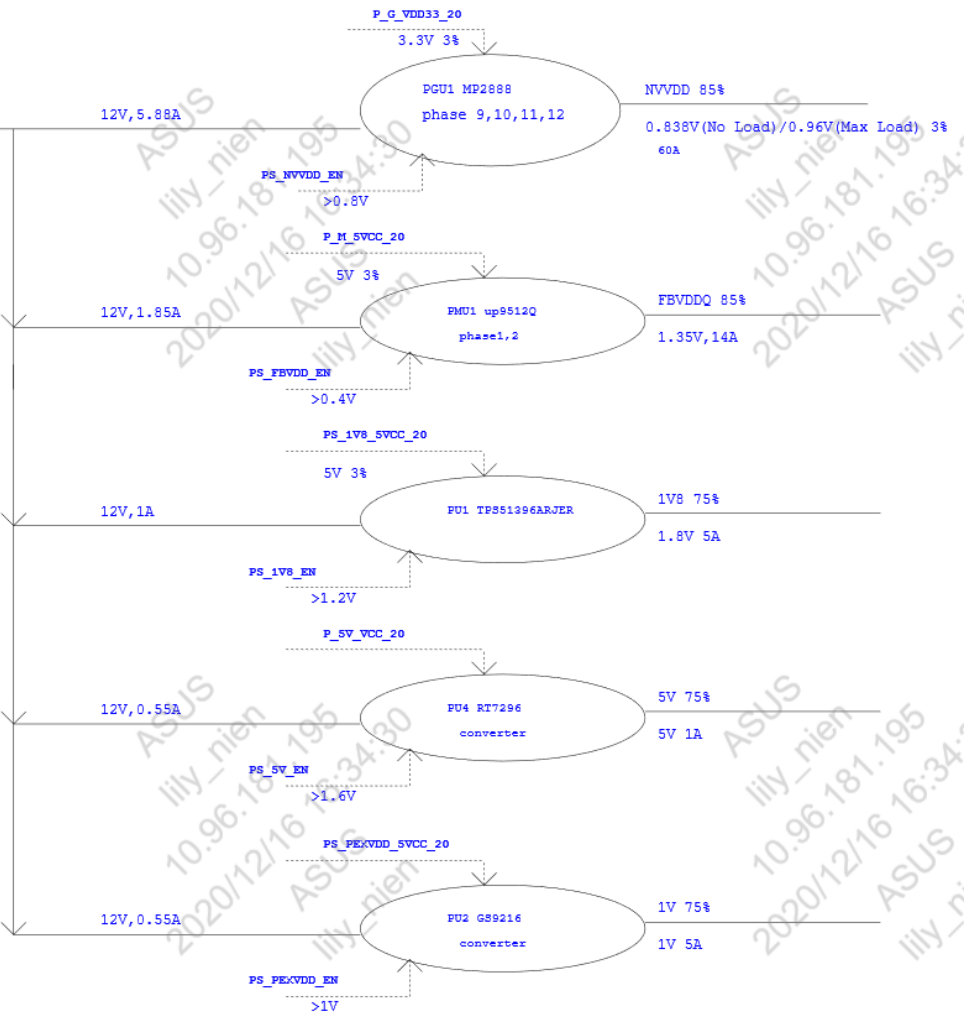
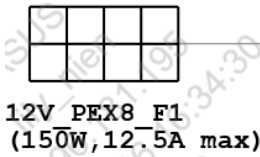
# BLOCK DIAGRAM



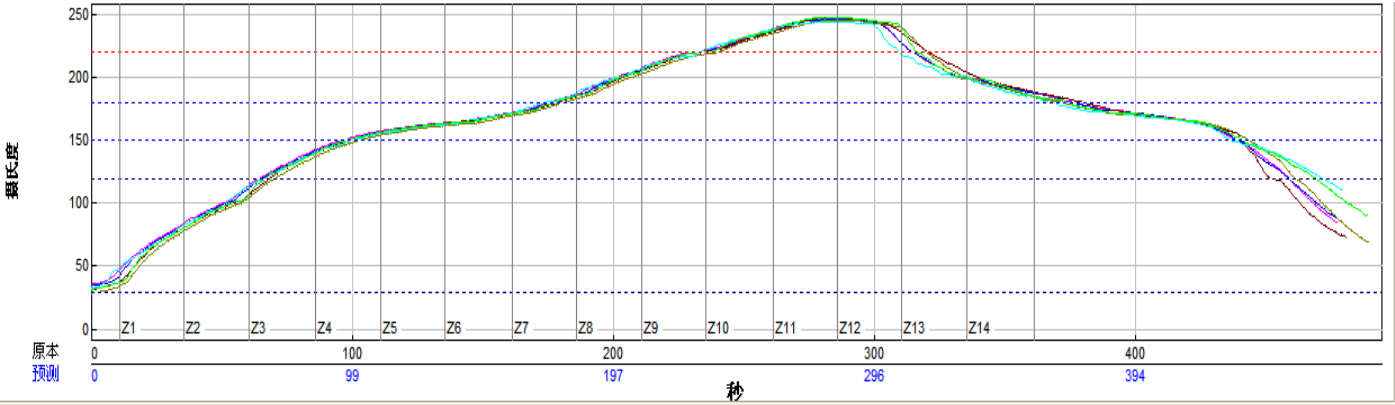
# VOLTAGE MEASURE POINT



POWER FLOW



BGA REFLOW PROFILE



TCs	温度最高上升斜率		温度最高下降斜率		预热 30至120°C		恒温时间 150至180°C		回流时间 /220°C		量
<TC2>	1.55	3%	-1.86	14%	64.22	-86%	78.12	21%	81.68	45%	246.73
<TC3>	1.61	7%	-1.70	30%	64.75	-84%	78.10	21%	80.89	38%	246.40
<TC4>	1.70	13%	-1.99	1%	67.17	-76%	78.03	20%	80.13	34%	245.62
<TC6>	1.63	8%	-2.23	-23%	67.97	-73%	79.87	32%	89.62	97%	247.78
<TC8>	1.52	2%	-1.36	64%	66.18	-79%	74.30	-5%	76.76	12%	244.23
<TC9>	1.68	12%	-1.50	50%	66.68	-78%	78.99	27%	84.52	63%	247.67
温差	0.18		0.87		3.75		5.57		12.86		3.55
P.<TC2>	1.54	3%	-1.85	15%	63.51	-88%	76.50	10%	80.02	33%	246.56